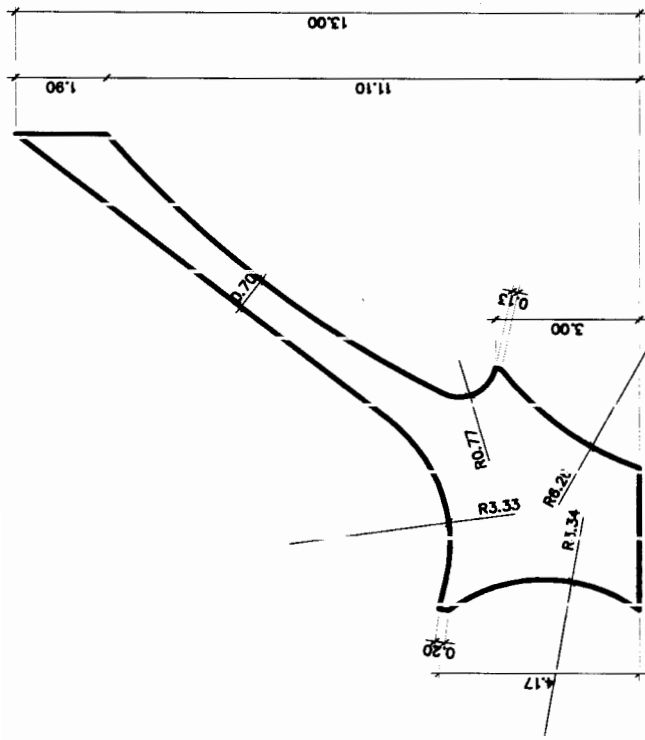


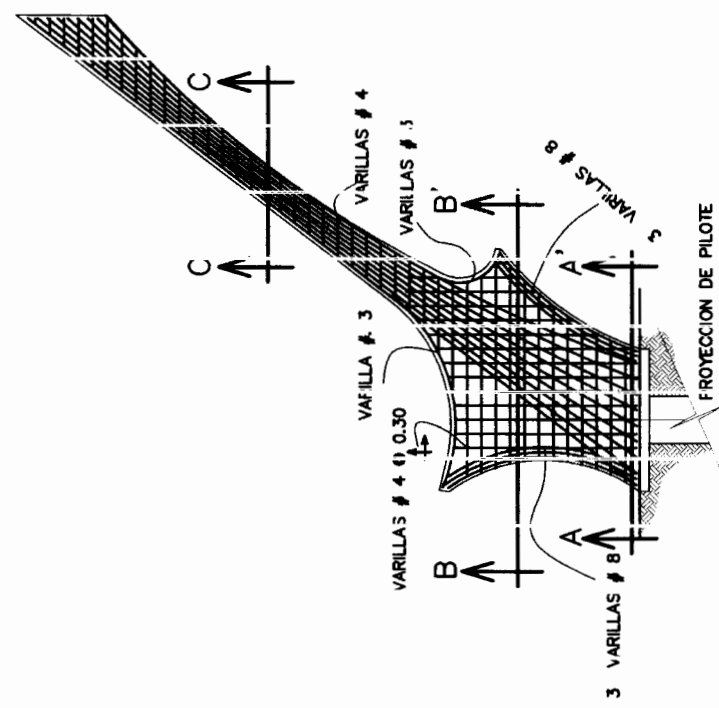
DETALLE DE ARMADO DEL PILOTE





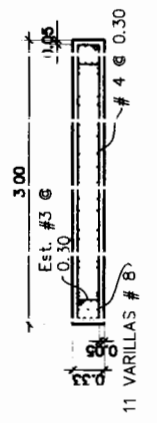
ELEVACION A-A'

ESCALA: 0 m 1 m 2 m

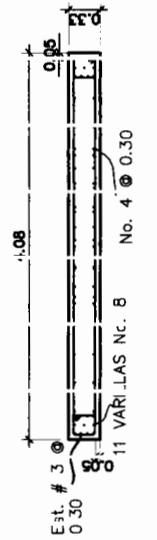


ELEVACION DE ARMADO

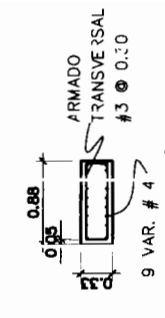
ESCALA: 0 m 1 m 1 m



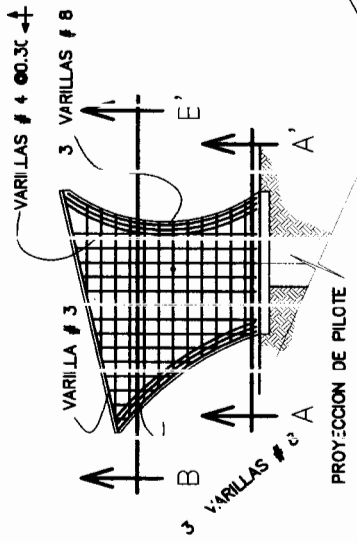
SECCION A-A'



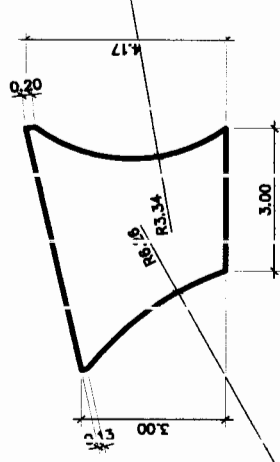
SECCION B-B'



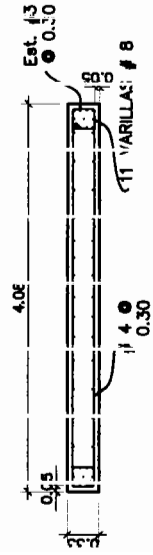
SECCION C-C'



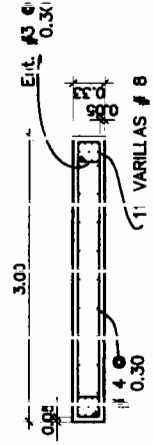
ELEVACION DE PILASTRA



ELEVACION ACCITADA

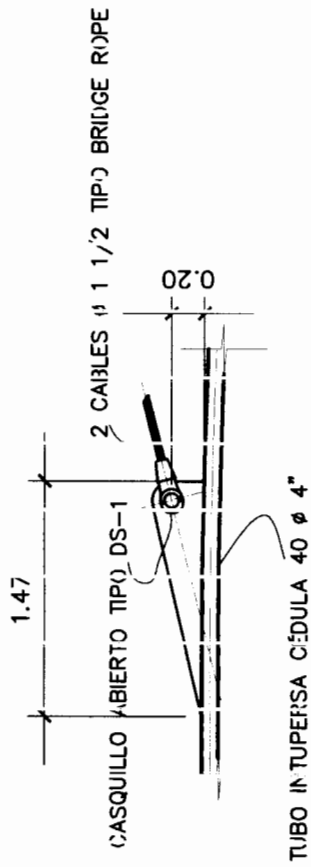


SECCION B-B'

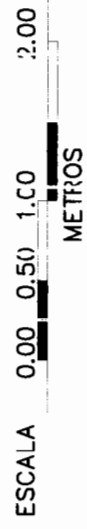


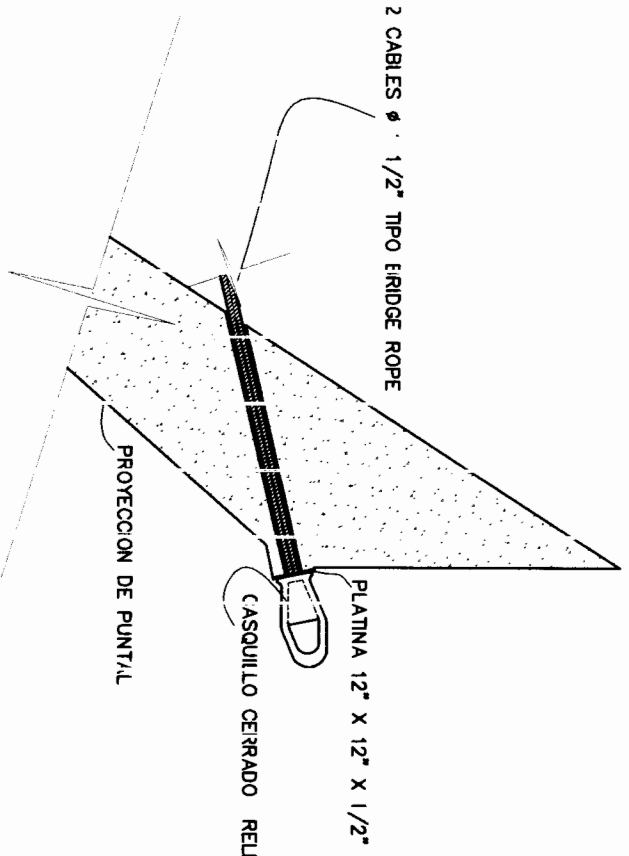
SECCION A-A'

ESCALA: 0 m 1 m 2 m



DETALLE DE ANCLAJE DE CABLE A ARCO DE MUELLE



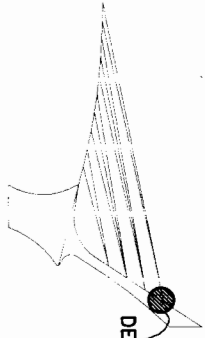


2 CABLES Ø 1/2" TIPO BRIDGE ROPE

PLATINA 12" X 12" X 1/2"

CASQUILLO CERRADO RELLENO CON ZINC

PROTECCION DE PUNTAL



DETALLE DE CONEXION EN PUNTAL

DETALLE DE CONEXION DE LOS CABLES AL PUNTAL

ESCALA 0.00 0.50 1.00 2.00 METROS